

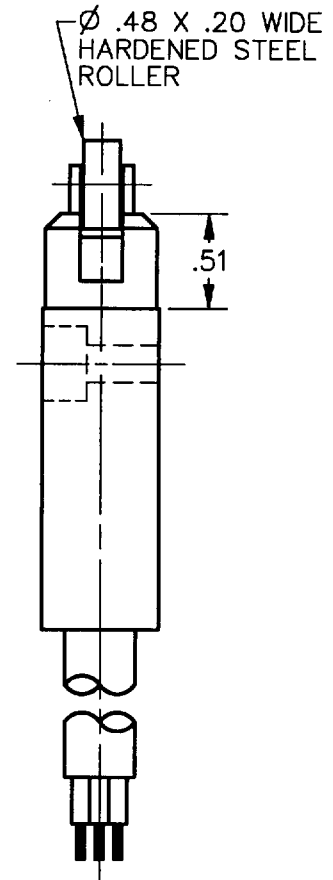
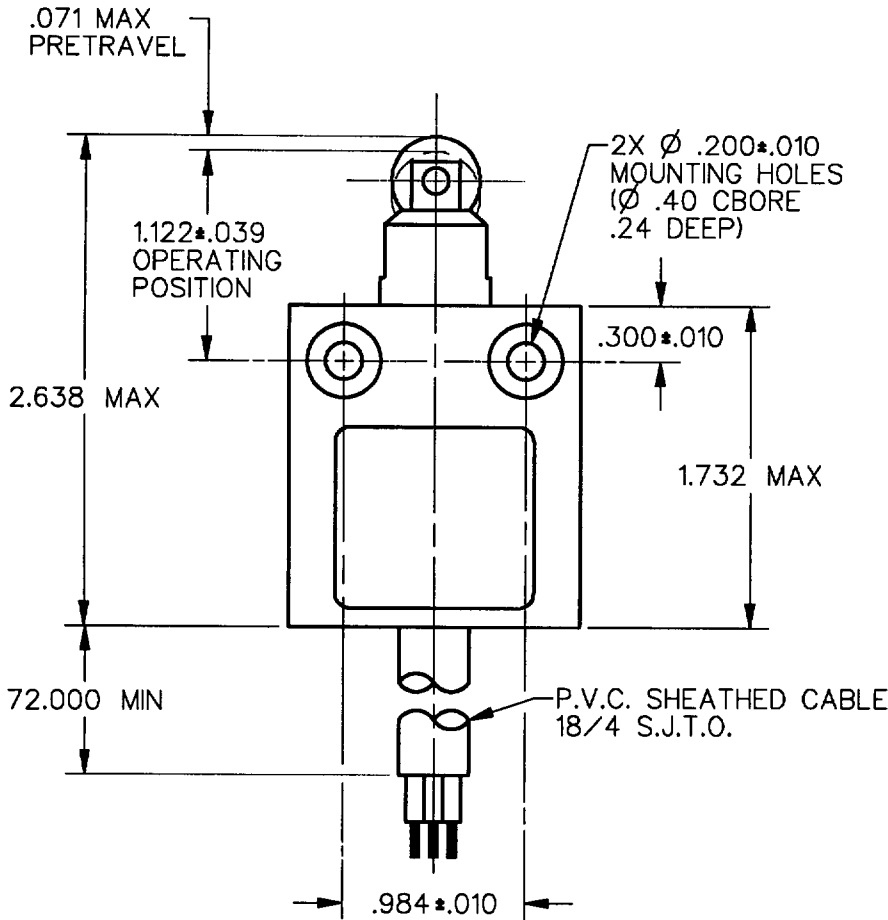
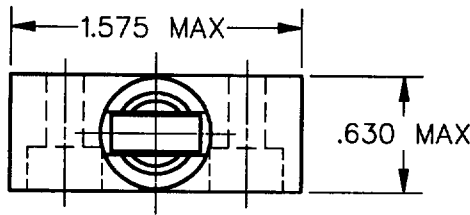
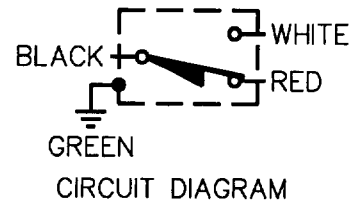
MICRO SWITCH
a Honeywell Division

FED. MFG. CODE 91929

**MINIATURE PRECISION
LIMIT SWITCH**

CATALOG LISTING

914CE2-6



NOTES
1 - ZINC HOUSING FINISHED WITH GRAY PAINT

ANSI Y14.5M-1982 APPLIES

THIS DRAWING COVERS A PROPRIETARY ITEM AND IS THE PROPERTY OF MICRO SWITCH, A DIVISION OF HONEYWELL. THIS DRAWING IS NOT TO BE COPIED OR USED WITHOUT THE APPROVAL OF MICRO SWITCH.



CHARACTERISTICS	
OPERATING FORCE	— — — 2.7 LB MAX
RELEASE FORCE	— — — 1.0 LB MAX
DIFFERENTIAL TRAVEL	— — — .004 MAX
OVERTRAVEL	— — — .118 MIN

ELECTRICAL DATA	
CONTACT ARRANGEMENT S P D T	
5A - 250 VAC 1/10HP - 125 OR 250 VAC	

SCALE	FULL	DO NOT SCALE PRINT
UNLESS OTHERWISE SPECIFIED TOLERANCES ARE		
ONE PLACE	(.0)	±.030
TWO PLACE	(.00)	±.015
THREE PLACE	(.000)	±.005
ANGLES		±
WEIGHT		



914CE2-6
 M
 DRAWING NUMBER
 5
 ISSUE
 REVISIONS
 A CO-69061
 S A V
 31 AUG 91
 CHECK
 14 NOV 91
 DRAW
 S A V 13 SEPT 91
 DDM/CAD
 DRAWN

REPLACES
 RELEASE NO. PR-2096
 CHECK
 14 NOV 91
 CHECK
 14 NOV 91